

An aerial photograph of the Lafayette College campus during autumn. The image shows a large green football field with a red track at the top. Below it are several large, multi-story buildings with stone and brick facades and green roofs. The campus is filled with trees in various shades of green and yellow. A prominent building with a white cupola is visible in the center. The overall scene is a well-maintained university campus.

LAFAYETTE

*Your First Year*

CLASS of 2022

ON THE HILL



# Hello *and* Welcome to Lafayette College!

Greetings, Class of 2022. It is my distinct pleasure to provide you with the 2018 New Student Advising Guide. In it, you will find a concise list of resources to assist you in your transition to Lafayette College. Your journey begins today, and it is important for you to be prepared for what is to come. At Lafayette, we encourage you to take full advantage of the many resources we offer, and I hope this guide will be an effective tool to help you establish a strong foundation at the College. The strength of a degree from Lafayette is rooted in the wide array of experiences you will have during your time as a student. I encourage you to challenge yourself to try new things and explore outside your comfort zone. Opportunities await you here at Lafayette College, and it is up to you to make the most of them. **Cur Non?**

Sincerely,

Brandon D. Morris  
*First-Year Class Dean of Advising and  
Co-Curricular Programs and Fellowship Adviser*





## SUMMER TO-DO CHECKLIST

### MAY

- Check your personal email for Lafayette ID/password setup on May 14.
- Complete your fall course registration between May 15 and June 15.

### JUNE

- Submit Disability Services accommodations (optional by June 1).
- Register for the Pre-Orientation Summer Program (optional by June 1).
- Complete the First-Year Housing Application through *MyHousing* by June 15.
- Enter your emergency contact information into Banner by June 30.

### JULY

- Submit Bailey Health Center forms by July 15.

### AUGUST

- Complete the Lafayette College Community Reading.
- View room, roommate, and meal plan assignment in *MyHousing* (approximately Aug. 1).
- Submit tuition payment by Aug. 8.
- Receive move-in schedule and arrival instructions via Lafayette email (approximately Aug. 15).
- International Student Move-in Aug. 19; Roommates Move-in Aug. 21.
- Complete Part 1 of the Alcohol.edu survey by Aug. 23.
- Arrive for First-Year Move-in (Aug. 24).
- Participate in First-Year Orientation Program Aug. 24–26 (mandatory).
- Attend your first day of classes on Aug. 27.



# WHAT TO BRING TO LAFAYETTE

## LINENS

- Pillows
- Extra-long twin bed sheets (36" x 80")
- Mattress pad/foam (7" deep)
- Blanket/comforter
- Towels/washcloths

## GROOMING/PERSONAL NEEDS

- Shower caddy
- Shower flip-flops
- Bathrobe
- Toiletries
- Medications

## LAUNDRY

- Laundry bag /basket
- Detergent/fabric softener
- Dryer sheets
- Stain remover
- Iron with auto shut-off/ironing board
- Drying rack
- Clothes hangers
- Sewing kit

## CLEANING SUPPLIES

- Trash can
- Broom/hand vacuum
- Dishwashing items
- Dusting materials
- Cleansers
- Paper towels
- Cleaning wipes

## PERSONAL INFORMATION

- Driver's license/state-issued identification
- Passport
- Social Security card
- Health Insurance card
- Bank account information
- Debit/Credit card

## STUDY

- Desk lamp (no halogen bulbs)
- Computer
- Ethernet cord
- School supplies (pens, highlighters, stapler, scissors, tape, envelopes)

- Surge protector
- Calendar/personal agenda
- Backpack/book bag
- Decorations
- Rug
- Bulletin board/pushpins
- Curtains (on tension rod only)
- Wall posters
- Photographs
- 3M Command Tack (for anything to be hung up)

## ENTERTAINMENT

- Television
- Video games
- Music/movies
- Bicycle
- Sports equipment
- Board games/playing cards

## MISCELLANEOUS

- Alarm clock
- Mini-fridge or Microfridge (College rental)
- Fan
- Batteries
- Phone/laptop chargers
- Rain gear (umbrella, boots)
- Flashlight
- Eating/cooking utensils
- Can opener
- Batteries
- First-aid kit
- Storage bins, foot lockers, trunks

## PLEASE DO NOT BRING\*

- Candles
- Incense
- Electric blankets
- Electric cooking appliances
- Electric heaters
- Pets
- Weapons of any kind

*\*Please see Housing Contract and Code of Student Conduct for complete description of policies pertaining to prohibited items.*

# WELCOME TO LAFAYETTE COLLEGE!

You have officially transitioned from the Office of Admissions to the Office of Advising & Co-Curricular Programs. This moment signifies your matriculation into the College and is the first of many personal milestones you will experience over the next few years. This message contains a great deal of important information regarding the tasks you will need to complete prior to the start of the Fall 2018 semester. Should you have any questions or concerns, please feel free to contact the Office of Advising & Co-Curricular Programs. We are here to help.

## COURSE EXPLORATION AND SELECTION PREFERENCES

As a new student it is time to review the course offerings at Lafayette for the Fall 2018 semester. The First Year Registration website is dedicated to helping new students view and submit first semester course selections. You should begin exploring the site now to understand your course options and to take online placement exams in Mathematics, Chemistry, and Foreign Languages.

You will receive your Lafayette email and password setup on **May 14**, you will need that information to complete the online placement exams as well as the course selection preferences process. Placement Exams will be available to you starting **May 15**. Online course registration will be active from **May 15** through **June 15**.

## YOUR GUIDE FOR THE SUMMER AND BEYOND

As you prepare to arrive on campus in August, the Connected Communities website is a wonderful resource that will help you during your transition to the college. The website is your hub for all sorts of pertinent information including answers to frequently asked questions and information on academic advising and campus life resources.

In addition, please be sure to “like” our Advising site on Facebook **Advising at Lafayette College** and follow us on Twitter **Lafayette Advising**; our social media sites are great repositories for information as well as central locations to ask questions about courses, policies, and campus life in general.

## COMMUNITY READING

At Lafayette, we try to orient you to our intellectual community by introducing you to the conversations and debates that will be occurring on campus through a common community reading. This year’s reading ***Hidden Figures***, written by Margot Lee Shetterly, chronicles “...the untold story of the black women mathematicians who helped win the space race”. You can find this book in our College Store, through Amazon, Audible, or a number of other leading book sellers.

## LAFAYETTE ACCOUNT

- Check your personal email for your Lafayette ID/Password setup on **May 14**
- You are required to enter your emergency contact information into Banner Self Service by June 30: <https://bannerselfservice.lafayette.edu>

## FALL COURSE REGISTRATION

- Open May 15 – June 15 | <https://fyreg.lafayette.edu>

## TIME MANAGEMENT TOOLS

- The following three documents will be very helpful in assisting you with managing your time. Bring them to campus in the fall!

## 2018 LAFAYETTE FALL SEMESTER CALENDAR

Sunday	Monday	Tuesday	Wednesday	Thursday	Friday	Saturday
<b>August 26</b>	27 Classes Begin	28	29	30	31	<b>September 1</b>
2	3	4	5	<b>6</b>	7 Drop/add deadline	8
9	10	11	12	13	14	15
16	17	18	19	20	21	22
23	24	25	26	27	28	29
30	<b>October 1</b>	<b>2</b>	3	4	5	6
7	8 Fall Break	9 Fall Break	10	11	12	13
14	15	16	17	18	19	20
21	22	23	24	25	26	27
28	29	30	<b>31</b>	<b>November 1</b>	2	3
<b>4</b>	5 Pre-Registration	6 Pre-Reg.	7 Pre-Reg.	8 Pre-Reg.	9 Pre-Reg.	10
11	12 Pre-Reg.	13 Pre-Reg.	14 Pre-Reg. WD Deadline	15 Pre-Reg.	16 Pre-Reg.	17
18	19	20	21 Thanksgiving Holiday	22 Thanksgiving Holiday	23 Thanksgiving Holiday	24
25	26	27	28	29	<b>30</b>	<b>December 1</b>
2	3	4	5	6	7 Last Day of Class	8
9	10 Reading Day	11 Final Exams	12 Final Exams	13 Final Exams	14 Final Exams	15 Final Exams
16 Final Exams	17 Final Exams	18 Final Exams	19	20	21	22

## 2019 LAFAYETTE SPRING SEMESTER CALENDAR

Sunday	Monday	Tuesday	Wednesday	Thursday	Friday	Saturday
<b>January 27</b>	28 Classes Begin	29	30	31	<b>February 1</b>	2
3	4	5	6	7	8 Drop/add deadline	9
10	11	12	13	14	15	16
17	18	19	20	21	22	23
24	25	26	27	28	<b>March 1</b>	2
3	4	5	6	7	8	9
10	11	12	13	14	15	16
17	18 <b>Spring Break</b>	19 <b>Spring Break</b>	20 <b>Spring Break</b>	21 <b>Spring Break</b>	22 <b>Spring Break</b>	23 <b>Spring Break</b>
24	25	26	27	28	29	30
31	<b>April 1</b>	2	3	4	5	6
7	8 Pre-Registration	9 Pre-Reg.	10 Pre-Reg.	11 Pre-Reg.	12 Pre-Reg.	13
14	15 Pre-Reg.	16 Pre-Reg.	17 Pre-Reg.	18 Pre-Reg.	19 Pre-Reg.	20
21	22 WD Deadline	23	24	25	26	27
28	29	30	<b>May 1</b>	2	3	4
5	6	7	8	9	10 Last Day of Class	11
12	13 Final Exams	14 Final Exams	15 Final Exams	16 Final Exams	17 Final Exams	18 Final Exams
19 Final Exams	20 Final Exams	21	22	23	24	25

Week Of:

Student:

	SUN	MON	TUE	WED	THUR	FRI	SAT
8:00 AM							
9:00 AM							
10:00 AM							
11:00 AM							
12:00 PM							
1:00 PM							
2:00 PM							
3:00 PM							
4:00 PM							
5:00 PM							
6:00 PM							
7:00 PM							
8:00 PM							
9:00 PM							
10:00 PM							
11:00 PM							
12:00 AM							
1:00 AM							
2:00 AM							
3:00 AM							





## Orientation and Welcome Weeks

Orientation is a three-day experience that takes place just prior to the start of classes in the fall. Orientation will provide new students with the opportunity to meet faculty, staff, current student leaders, and other new students at Lafayette. It familiarizes them with our shared community and academic values and expectations, encourages them to understand the importance of operating in Lafayette's pluralistic and inclusive community, introduces them to resources that can assist them in making a successful transition to college life, and instills in them an appreciation for the value of an academically rigorous and diverse community.

Our Orientation and Welcome Week staff consists of 60+ undergraduate students, all here to assist new students' transition and feel connected to Lafayette College. These upper-level leaders will help students become familiar with resources, support services, and information that will foster success. Student staff gives the inside scoop on how to take advantage of what's happening on campus. From basketball games to aerobic classes, libraries to research opportunities, events to student organizations, these staff members teach you about Lafayette!

### ORIENTATION SCHEDULES

#### **International Student Orientation** | Aug. 19-23

A team of international student peer advisers and professional staff will ensure a smooth arrival and transition to living in the United States. We will pick up students at a designated airport, offer shopping trips, complete necessary tasks, and provide information about academics, social life, and food. Both international students and their roommates are encouraged to take part in this experience.

**International Student Move-in** | Sunday, Aug. 19

**Roommate Move-in** | Tuesday, Aug. 21

#### **Domestic Roommates of International Students**

If you are a domestic student and are matched with an international roommate, you will be invited to move in prior to general orientation to join in Lafayette's unique International Orientation program, designed to build cross-cultural friendships in a relaxed environment. Participants will be given the opportunity to explore each other's backgrounds through fun and engaging activities both on and off campus.

**New Student Orientation** | Aug. 24-26

**Welcome Weeks** | Aug. 27–Sept. 8

Visit the Orientation Schedule website (<https://connectedcommunities.lafayette.edu/first-year/orientation>) for details. You also will be given a copy of the schedule when you check into your residence hall.

### 5 WAYS TO MAKE FRIENDS

- 1. Orientation and Welcome Weeks**  
*Explore Lafayette and Easton. Expand your horizons. Live in the moment.*
- 2. Commons Residence Hall**  
*Every Commons has a Commons Council and Commons events.*
- 3. Join an Organization**  
*Don't miss the Annual Involvement Fair held during the second week of classes.*
- 4. Play Sports**  
*Register for an intramural sport or join one of over 30 sports clubs. Whatever your level of play, there is a team for you.*
- 5. Be Courageous**  
*Introduce yourself to the person next to you. Try something new. Take advantage of every opportunity. Find your passions.*



## First-Year Housing

### LIVING ON CAMPUS

A huge benefit of attending a residential college like Lafayette is that living on campus with your classmates and friends affords countless opportunities for both intellectual and social development. Much of your out-of-classroom time will be spent in your residence hall. Your room will become your study space, your center for communications, and your social scene. By living on campus, you will engage in the sharing of knowledge without even thinking about it. For example, a casual exchange in the hallway with a floormate can teach you about customs and cultures other than your own.

### LIVING WITH A ROOMMATE

There is value in learning to negotiate common living space with a roommate. We recognize that for some students this experience will be an adjustment from having their own room at home. Yet, sharing a living space will help you develop interpersonal skills that will be invaluable in the future. Roommates are encouraged to build their relationship through communication, open-mindedness, and compromise.

For more information and suggestions, see the “Living with a Roommate” page on the Residence Life website, <https://reslife.lafayette.edu>.

### FIRST-YEAR HOUSING APPLICATION

Using your responses to the First-year Housing Application, the Office of Residence Life will place you with a compatible roommate. Factors that are important for a successful roommate and hall community match include:

**Sleep schedule and habits:** *How much sleep do you need each night? Can you sleep with lights or noise?*

**Living habits:** *How do you want the room to be used for socializing and study?*

**Room organization:** *Do you prefer a room that is neat and orderly?*

.....

Instructions for completing the First-year Housing Application will be sent to your Lafayette email approximately June 1. You will receive your room assignment and roommate contact information in early August.

.....



# The Commons

<https://connectedcommunities.lafayette.edu> | (610) 330-5082 | Hogg Hall and Scott Hall

New students are assigned to one of five Commons. Each Commons is comprised of a single or adjacent residence hall(s) and serves as the foundation for students' first-year community. Commons gather throughout the year for special events and speakers, compete in first-year intramural sports, host socials for Commons members, and form unique identities that facilitate formation of a connected community within the larger Lafayette student community.

*Which Commons will you call home?*



WATSON



RUEF AND EASTON



MCKEEN AND GATES



CONWAY AND KAMINE



MARQUIS AND SOUTH

# Dining Services

At Lafayette College, dining is integral to the residential college experience and plays an important role in helping students make connections, form communities, and learn from their food and consumption. As part of Connected Communities, Dining Services provides nutritious, appetizing food with a variety of convenient dining options for all palates and dietary restrictions. Small, local farms are directly supported by Dining Services, and food is cooked from scratch with homemade dressing, sauces, soups, and stocks and no processed or canned foods.

You can learn about “meal exchange,” “to go” containers, advance meal ordering, as well as the Well-Being Indicator® [dining.lafayette.edu](https://dining.lafayette.edu).

## DINING OPTIONS

In total, there are six dining venues on campus with diverse menus for students available by using the Lafayette ID card. These cafés include:

### Two dining halls providing All-You-Care-To-Eat service

- Upper Farinon on 2nd Floor of Farinon College Center
- Marquis Hall 1st Floor

### Four retail locations

- Gilbert’s Café in Kirby House
- Skillman Café in Skillman Library
- Lower Farinon on 1st Floor of Farinon College Center
- Simon’s Café in Kamine Hall

## MEAL PLANS

Members of the Class of 2022 will be assigned to the 20-Meals-Per-Week Plan that provides access to both dining halls and participation in meal exchanges at the four retail locations. The meal plan includes \$50 in Pard Dollars per semester. This prepaid cash balance account allows students to use their student ID card for purchases at dining locations on campus and participating off-campus vendors.

# College Store

Supporting the needs of our students and the entire Lafayette community, the College Store stocks all the textbooks and academic materials you will need for your classes as well as a large selection of Lafayette apparel and gift items. Convenient online shopping can be found at <https://lafayette.edu/collegestore>, and you can also reach out to staff via Facebook, Instagram, and Twitter. The College Store is independently operated by Lafayette, and any proceeds support the College’s facilities, operations, and programs.



Your College Store account will be activated on July 1, allowing you to conveniently charge your purchases using your Lafayette ID. If you choose to use this method of payment, all College Store charges will appear on your student account, similar to your room and board charges.

In July, you will receive an email with instructions on how to participate in the optional Textbook Reservation Program. When the information requested in the email is submitted, your books will be charged to your student account, packaged together, and ready for pickup at the College Store when you arrive Friday, Aug. 24. At the end of the semester, check out the College Store’s competitive textbook buyback prices, which often beat those of used book companies.

## STORE HOURS

Monday – Friday, 8:45 a.m. – 5 p.m., Saturday, 11 a.m. – 3 p.m., Sunday Closed

## SUMMER HOURS

Monday – Friday, 8:15 a.m. – 4:30 p.m., PHONE: (610) 330-5511, <https://lafayette.edu/collegestore>



## Academic Advising Team

Lafayette is committed to helping students become knowledgeable, thoughtful, and mature members of our liberal arts community. To that end, the College offers many resources and opportunities that span the campus. Learning how to use what is available in order to define one's academic and personal goals is a vital step to a student's success in a classroom, library, laboratory, residence hall, organization, and community project.

Each student has a team of advisers who are ready to assist; they include, but are not limited to:

- Faculty advisors are assigned to incoming students and continue to work with them until students declare a major in the spring of their sophomore year. The faculty advisor guides students on their intellectual journeys, ensuring they are correctly navigating the common course of study and preparing to move to a departmental home.
- Class deans (<https://advising.lafayette.edu/class-deans>) in the Office of Advising and Co-Curricular Programs provide additional resources for students' academic planning. They monitor academic progress and serve as a vital link among students, faculty, and staff/administrative services across the campus.
- College administrators will be assigned to work with incoming students as a means of providing additional support during this time of transition. International students, student-athletes, and other groups will be assigned to staff members who are intimately aware of various resources on campus.
- Career services advisers work with students as part of the nationally recognized *Gateway* program to identify their strengths and interests and to optimize career-building opportunities such as internships and externships.
- PARDners (peer advisers) aim to assist students in their transition, development, and success at Lafayette College from New Student Orientation through the end of their sophomore year. PARDners are available to assist first-year students with online academic advising over the summer. Students should take advantage of opportunities to chat with upper-level student advisers in May and continue the conversation through the end of course registration in June. You will find contact information for PARDners as well as information regarding their academic and co-curricular interests at (<https://fyreg.lafayette.edu/ask-a-pardner>).
- Resident Advisors and Orientation Leaders provide guidance as student leaders for the first year and beyond. Peer Mentors, tutors and supplemental instruction leaders provide student-to-student academic support through the ATTIC.



## Academic Tutoring and Training Information Center

The Academic Tutoring and Training Information Center (ATTIC), located on the third floor of Scott Hall, provides tutoring and academic support through a variety of programs designed to enhance students' academic skills and enrich their overall learning. Programs offered through the ATTIC include Supplemental Instruction (SI), Peer Tutoring, and Mentored Study Groups. In addition, the ATTIC houses the **Disability Services Office** and **Student Athlete Support** program. Academic coaching and academic skill development also are provided by the center's professional staff. A primary goal of the support options available through the ATTIC is the development and enhancement of meta-cognitive skills so that students are able to address future challenges to their learning.

Supplemental Instruction leaders will be introduced in classes that offer this support option during the first week of class. Be sure to let your SI leader know the best times for him or her to hold sessions.

Requests for peer tutoring can be made starting the second week of the semester and are accepted until the 13th week of the semester.

Students who experience disabilities should provide documentation as soon as possible, (10-12 weeks prior to the start of orientation is preferable). Documentation should specifically state a diagnosis and anticipated impact of the disability within the college environment, as well as types of accommodations that could help mitigate the impact of the disability. Questions and documentation should be submitted to Rebecca Brenner, MSW, coordinator for Disability Services, by email: [brennerr@lafayette.edu](mailto:brennerr@lafayette.edu) or by phone: (610) 330-5098.

Student athletes should keep an eye out for information regarding New Student-Athlete Orientation, which is typically scheduled to take place during the first two weeks of classes. This meeting will go over student-athlete structured study obligations and provide new student athletes with an opportunity to meet with their peer mentor. Caroline Riepenhoff is available to address questions regarding academic enrichment and support for student athletes by email: [riepenhc@lafayette.edu](mailto:riepenhc@lafayette.edu) or by phone (610) 330-5098.

Are you a competent student who could use some extra cash? The ATTIC is one of the largest student employers on campus and offers ongoing training sessions for those interested in becoming a peer tutor or SI leader. Check the ATTIC's website at the beginning of the semester, <https://attic.lafayette.edu>, for updated information on training, programs, and services offered through the ATTIC.

# Student Leadership and Involvement

<https://getinvolved.lafayette.edu> | (610) 330-5337 | Farinon College Center

Benjamin Franklin said, “Tell me and I’ll forget. Show me and I may remember. Involve me and I learn.” We believe that’s true and recommend you EXPLORE the possibilities, get INVOLVED, CONNECT with your class, TRY new things, and leave YOUR mark!

## EXPLORE THE POSSIBILITIES

The **Involvement Fair** provides a venue for students to discover all the involvement opportunities available. Student organizations and campus departments are prepared to meet and greet students and share their positive experiences about being involved. This is your chance to learn about student organizations and how you can become a member. There is something for everyone.

## GET INVOLVED

Lafayette boasts more than **100 opportunities** for students to become involved in an intensive co-curricular experience through the Division of Campus Life. Academic honor societies, cultural and social organizations, community outreach, arts programs, sports clubs, and living groups are just a sample of life at Lafayette.

## CONNECT WITH YOUR CLASS

Join your classmates for a special evening to celebrate **1,000 Nights to Graduation**. This event is a Lafayette tradition for first-year students only and one of many class-wide events to celebrate the 185th class of Lafayette.

## TRY NEW THINGS

Campus **events and programs** provide a unique opportunity to learn and grow outside the classroom. Lafayette is dedicated to enhancing traditions, developing innovative programs, and focusing on social, cultural, and global issues. Make sure you check out the online campus calendar for up-to-the minute events.

## LEAVE YOUR MARK

Tell your story, be the change, create a legacy, and lead by example. Lafayette is the place where you can **make it happen!** How will you leave your mark?

## IT STARTS HERE...STUDENT LEADERSHIP AND INVOLVEMENT

Student Leadership and Involvement promotes a diverse and active lifestyle through opportunities for campus leadership, involvement in clubs and organizations, and exploration of interests and issues.

**LafSync** | <https://Lafsync.lafayette.edu>

Life on the Hill starts here. Discover ways to get involved on campus and find peers and friends. LafSync is a web-based community that allows students to explore student involvement opportunities, stay connected with news posts, and check out events on campus.



## CHECK OUT ORGANIZATIONS IN THE FOLLOWING CATEGORIES:

Academic and Pre-Professional / Arts / Class and College-Wide / Community Engagement / Cultural Fraternities and Sororities / Media and Publications / Peer Counseling and Peer Education / Recreation and Leisure / Religious and Spiritual / Residential Communities / Social Action, Government and Political

# Religious and Spiritual Life

<https://religiouslife.lafayette.edu> | (610) 330-5959 | Farinon College Center

The College Chaplain and Director of Religious and Spiritual Life works with students, faculty, and staff during times of grief and distress. Lafayette's campus is interfaith and inclusive in nature. We are open to talk with anyone regarding issues of religion, spirituality, grief, and other topics related to purpose, values, and life goals.

## INTERFAITH COUNCIL

The Interfaith Council is an alliance of students and advisers from the religious life organizations and major religious and spiritual traditions represented at Lafayette. The Council meets regularly to discuss programming ideas and issues affecting people of faith on campus.

## FAITH ZONE

The Faith Zone program allows for individuals on campus to show they are allies of Religious and Spiritual Life by attending a training session so they are more familiar with the religious diversity on our campus. If students have questions about religious dietary restrictions or any other questions about how they can comfortably practice their faith on campus, please call (610) 330-5959.

## RELIGIOUS ACCOMMODATIONS

If students want to request religious accommodations related to meal plans, housing, or other areas of life on campus, or have any other questions about how they can comfortably practice their faith on campus, please call (610) 330-5959 to speak with Chaplain Hendrickson.

## TALL (TALKING ABOUT LOSS AND LIFE)

TALL is a space for students to meet and talk about issues of grief and loss. All students are welcome to gather and share support relating to issues of death, divorce, illness, and changes in life circumstances.

## WORSHIP OPPORTUNITIES

### ***Protestant Worship***

Protestant worship is held on campus multiple times during the school year. Please consult the campus calendar for more information.

### ***Catholic Mass***

Catholic Mass is celebrated 5:30 p.m., every Sunday in Colton Chapel, when classes are in session.

### ***Jewish Shabbat Services***

On-campus Shabbat Services are held 5 p.m., every Friday in Hillel House, 524 Clinton Terrace, when classes are in session.

### ***Muslim Prayers***

Lafayette is home to a vibrant Muslim Students Association. Weekly prayers are held Fridays at the Easton Mosque; transportation can be arranged for students who wish to attend. A Muslim Prayer Room is maintained on the lower level of Hogg Hall and is available to all students.

### ***Buddhist Sitting Meditation***

Lafayette faculty, staff, students, and alumni, as well as the public, are invited to participate in the Lafayette sitting meditation group. The group meets weekly in the Interfaith Chapel in Hogg Hall (usually on Tuesdays at lunchtime; check the college calendar to confirm the weekly schedule). A limited number of cushions are available; please bring your own if you have one.

### ***Yoga as a Spiritual Practice***

Instructors guide students in discovering the real power of yoga, which is unleashed when we engage yoga not just as a set of postures but as a way of life.

### ***Off-Campus Worship***

The College Chaplain can help students make contact with off-campus religious congregations and organizations. Call (610) 330-5959 to inquire.

### ***Student Religious and Spiritual Organizations***

Plan on attending the Student Involvement Fair during Welcome Weeks to sign up to learn more about Religious and Spiritual Life student organizations.





## Recreation Services

<https://recreation.lafayette.edu> | (610) 330-5770 | Kirby Sports Center

Our department provides exercise-centered experience within a safe environment and in a respectful atmosphere for participants of all ability levels.

### GROUP FITNESS

View a schedule, read class descriptions, and register at: <https://recreation.lafayette.edu/fitness/group>.

### INTRAMURAL SPORTS

View a schedule and entry deadlines plus register at: <https://recreation.lafayette.edu/intramurals>. This is important if you wish to win the McGaughey Cup Challenge, a yearlong competition among the First-Year commons! Earn points for commons affiliation based on entering, winning, and more: <https://recreation.lafayette.edu/im-challenge>.

### OPEN RECREATION

You can choose to exercise on your own time in our state-of-the-art fitness center, on the racquet courts, on the climbing wall, in the swimming pool, inside the soccer court, or on the basketball courts. There are plenty of ways to create your own Active.Social.Life!

### SPORTS CLUBS

If you want something more competitive or a place to participate year-round, try sports clubs. There are 30 different opportunities. Read more and join at: <https://recreation.lafayette.edu/sportsclubs>.

### EMPLOYMENT

Our department is one of the largest and most diverse employers on campus. Check out how to get involved working in the fitness center, in the pool, or officiating sports: <https://recreation.lafayette.edu/employment>.

## Rec Services is Social!

Mobile App: Search "Lafayette Recreation"





## International and Off-Campus Education

**450+ Lafayette students study off campus each year!**

(Among top 20 institutions in our category in official *Open Doors* report)

### **SIX THINGS TO DO IF YOU PLAN TO STUDY ABROAD:**

1. Visit the Lafayette website: <https://studyabroad.lafayette.edu>.
2. Attend a mandatory Get Started session (details on website).
3. Attend a Study Abroad Fair (typically scheduled during the second week of fall semester only).
4. Schedule a one-on-one advising appointment with Study Abroad office.
5. Talk with your professors and academic adviser.
6. Start your planning as soon as possible!

### **OPPORTUNITIES INCLUDE:**

#### **Short-term programs:**

*Interim programs*

*(January and May/Summer terms):*

- Faculty-led, 3-8 weeks in length (1-2 credits)
- Destinations may vary every year
- Limited spots available
- Registration: Sept. 10ish every year (works like registration for ANY other course)
- Dedicated financial aid pool
- Marquis Scholars receive \$4,000 award toward one interim program
- Open to first-year students

#### **Long-term programs:**

*Semester-long faculty-led*

*(4 programs, 2 of which are for engineers):*

- London, UK, and San Jose, Costa Rica (fall)
- Madrid, Spain, and Bremen, Germany (for engineers only)
- A “signature” Lafayette model
- Advantages: Lafayette resident director, strong partnership with host institutions, competitive cost/benefit

#### **Semester or year with a third-party program provider:**

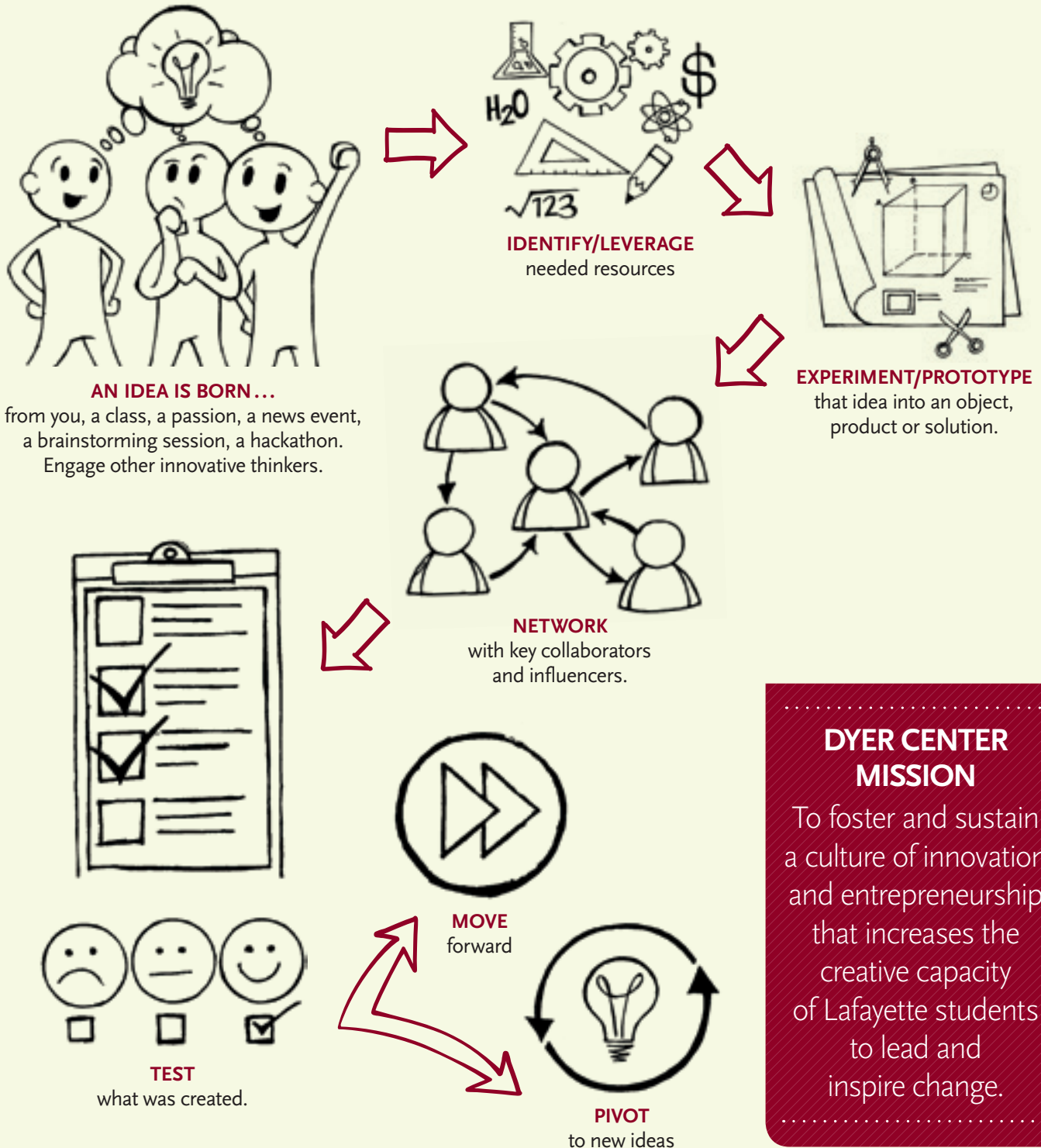
- Long list of affiliated programs all over the world
- Credits AND grades transfer back to Lafayette
- Financial aid “travels” with students
- Costs may vary (financial agreements: Lafayette tuition or higher + host institution housing fee; airfares and visa expenses, etc.)

*We hope to see you in our office (Pardee 121-123-125) soon!*

# Dyer Center for Innovation and Entrepreneurship

<https://dyer.lafayette.edu> | (610) 330-3091 | Hogg Hall

Dyer Center students learn design thinking, financial analysis, product/idea prototyping, and the marketing skills necessary to take an idea from conception to development. Through courses, co-curricular programming, internships, mentoring, and competitions, Dyer is designed to support and educate the next generation of innovators and entrepreneurs.



**DYER CENTER MISSION**

To foster and sustain a culture of innovation and entrepreneurship that increases the creative capacity of Lafayette students to lead and inspire change.

# Bailey Health Center | <https://healthcenter.lafayette.edu> | (610) 330-5001

Staff at the Bailey Health Center knows how difficult it can be to make decisions, including ones about health and wellness. Staff members are always willing to answer all your questions, and to make this process even more simple, we answered many of your questions on our website at <https://healthcenter.lafayette.edu> under *Frequently Asked Questions*.

Our center requires much of the same documentation your family health provider may ask for, and these forms can also be found on the website. It is important that all first-year students complete all the required forms on or before July 15, 2018, to make using health services seamless. Below is a checklist of all our required information and forms, where they can be found, and what to do with them. I hope you find the time to peruse our website to see our staff, hours, and what services we can provide your student while on campus. Stay healthy!

REQUIREMENT	WHERE IT CAN BE FOUND	HOW TO COMPLETE	DATE DUE
<b>Emergency Notification Form</b>	<a href="https://Lafayette.medicatconnect.com">https://Lafayette.medicatconnect.com</a>	<input type="checkbox"/> Complete online <input type="checkbox"/> Submit	July 15, 2018
<b>Health History Form</b>	<a href="https://Lafayette.medicatconnect.com">https://Lafayette.medicatconnect.com</a>	<input type="checkbox"/> Complete online <input type="checkbox"/> Submit	July 15, 2018
<b>Physical Form</b> <i>Our Form MUST be completed and signed</i>	<a href="https://Lafayette.medicatconnect.com">https://Lafayette.medicatconnect.com</a> <a href="https://healthcenter.lafayette.edu/health-forms">https://healthcenter.lafayette.edu/health-forms</a>	<input type="checkbox"/> Print out <input type="checkbox"/> Have family physician complete <input type="checkbox"/> Mail to Bailey Health Center	July 15, 2018
<b>Immunization Record</b> <i>Our Form MUST be completed and signed</i>	<a href="https://Lafayette.medicatconnect.com">https://Lafayette.medicatconnect.com</a> <a href="https://healthcenter.lafayette.edu/health-forms">https://healthcenter.lafayette.edu/health-forms</a>	<input type="checkbox"/> Print out <input type="checkbox"/> Have family physician complete <input type="checkbox"/> Mail to Bailey Health Center	July 15, 2018
<b>Insurance Information &amp; Waiver</b>	<a href="https://Lafayette.medicatconnect.com">https://Lafayette.medicatconnect.com</a> <a href="https://healthcenter.lafayette.edu/health-forms">https://healthcenter.lafayette.edu/health-forms</a>	<input type="checkbox"/> Sign up or submit waiver online <input type="checkbox"/> Complete Insurance Information form and mail to Bailey Health Center	July 15, 2018

## Counseling Center

<https://counselingcenter.lafayette.edu> | (610) 330-5005 | *Bailey Health Center, second floor*

The Counseling Center provides individual and group counseling to help students meet challenges they are likely to face during the next four years. Typical concerns that students seek help with are:

- Relationship problems
- Feeling anxious or unhappy
- Low motivation or uncertainty about goals and interests
- Behaviors and habits that are interfering with one's well-being and success

Students may meet with a counselor for up to 15 individual sessions per academic year. The Counseling Center staff can provide referrals to local mental health professionals for students who are seeking longer-term treatment or whose concerns require services not offered at the Counseling Center. All contacts with counselors are confidential under the guidelines of the Commonwealth of Pennsylvania.

About **40%** of students seek counseling at least once during their four years at Lafayette.

### QUICK FACTS

- Services are free. We do not accept requests to pay for additional sessions using cash or insurance.
- The center is open Monday–Friday, 8:45 a.m.–5 p.m. for 50-minute appointments.
- Walk-in hours are available 10–11 a.m. and 3–4 p.m. daily for urgent concerns.

# AlcoholEdu and Sexual Respect

<https://aods.lafayette.edu> | <https://sash.lafayette.edu>

Lafayette College is steadfast in its approach to ensuring it is a safe and healthy environment for all students regardless of one's choices. Lafayette uses measures that target education and outreach such as student advocacy, peer education, and social programming, combined with continued enforcement of College policy and Commonwealth law.

## ALCOHOL.EDU AND HAVEN

Later this summer, you will receive information about completing two short online courses called AlcoholEdu and Haven, the College's introduction to issues of sexual assault and affirmative consent. Be on the lookout for that message in late July and note that completion of these courses is required before move-in day. The due dates are listed in the chart below.

ALCOHOLEDU FOR COLLEGE   COURSE OPENS JULY 30, 2018		
Always sign in at: Lafayette's AlcoholEdu portal at <a href="https://aods.lafayette.edu">https://aods.lafayette.edu</a> Once at this website, use your Lafayette single sign-on credentials to access AlcoholEdu	<b>PART 1 DUE:</b> Aug. 23, 2018	<b>PASSING:</b> Minimum Exam Score: 80%

## LIVEWELL ADVISERS

In partnership with the *LiveWell Lafayette* campus initiative, LiveWell Advisers are a group of upper-level peer mentors who educate the student body about holistic well-being. LiveWell Advisers promote legal, safe, and responsible choices by fostering healthy living and social environments across campus. They also educate students about the impact of alcohol and/or drug use on overall student well-being and academic performance.

## GOOD SAMARITAN POLICY

The College's Good Samaritan Policy is designed to encourage students to seek emergency assistance for themselves or others if they have abused alcohol or other drugs, without fear of reprisal or disciplinary conduct outcomes. If students or others have consumed alcohol or other drugs and are concerned for their own safety or that of their peers, the Good Samaritan Policy ensures they can call for help without formal College disciplinary action, provided the policy is not used repeatedly or flagrantly. The full Good Samaritan Policy is published in the College's Student Code of Conduct.

## REPORTING SEXUAL MISCONDUCT

Some forms of sexual misconduct prohibited by college policies also may be crimes under Pennsylvania law. If you believe that you have been the victim of a crime, the College can assist you with reporting criminal activity to law enforcement authorities, or you may contact the Office of Public Safety directly, 24/7. The College will respond to all incidents involving sexual misconduct through informal or formal mechanisms. To learn more or report an incident to the College, contact the Title IX and Equity Coordinator.

## TITLE IX AND EQUITY COORDINATOR

Students or applicants for admission to Lafayette College who believe they have been discriminated against on the basis of sex may file a complaint with the Title IX and Equity Coordinator. The Title IX and Equity Coordinator, in consultation with other relevant administrators, will assist the complainant in identifying the appropriate Lafayette College policy and grievance procedure to resolve the complaint in a prompt and equitable manner.

# Public Safety

<https://publicsafety.lafayette.edu> | (610) 330-5330 | Emergency (610) 330-4444 | Marquis Hall, ground floor

The Department of Public Safety provides a safe and secure learning environment for the Lafayette community. The staff consists of commissioned police officers with full police powers and security officers. Officers patrol the campus and surrounding area around-the-clock every day of the year. All Lafayette officers are certified in first aid, CPR, and automated external defibrillator use. In addition to the police and security function, the department is also responsible for Environmental Health and Safety (EHS). The EHS division consists of certified specialists who conduct: building and laboratory inspections; ergonomic, lighting, indoor air quality surveys; fire exit drills and EHS-related situations.

## LAFAYETTE E2CAMPUS EMERGENCY ALERT SERVICE

A free notification system, this service enables you to receive alerts on your cellphone in the event of a significant emergency on or close to campus. Use of the system is reserved for situations that involve imminent danger. When the system is activated, those enrolled will receive a short text message that describes the situation and gives instructions. To participate in the e2 alert system, *students must register* via a link on the Public Safety website.

## BLUE LIGHTS

Exterior phones are strategically located throughout the campus and are readily identified at night by blue lights located above or near them. The phones are equipped with red emergency buttons for direct connection to Public Safety for police, fire, or medical emergencies and a keypad for dialing any campus number.

## LCAT SHUTTLE SERVICE

The **Lafayette College Area Transportation (LCAT)** shuttles have an expansive schedule that connects the main campus with the College's athletic fields, downtown Easton, local shopping areas, movie theaters, and the local bus station. The LCAT Special shuttle also provides transportation between campus and Lehigh Valley International Airport (LVIA) on designated days. Check out the live **online tracking system** to see where LCAT shuttles are right now.

## RIDE SYSTEMS APP

Ride Systems is the company that provides the shuttle-tracking software. This allows you to see exactly where the LCAT is at all times. If you download the mobile app, you will have to search in iTunes or Android Marketplace for "Ride Systems."

## UHAUL CAR SHARE PROGRAM

Two vehicles are available on campus (in designated spots in the lot adjacent to March Field) that can be rented by students 24 hours a day, 7 days a week through **UHaulCarShare**, a leading car share and car club service. These fuel-efficient vehicles can be rented by students, staff, and faculty for a low hourly (or daily) rate.

The availability of the LCAT shuttle and the Car Share program eliminates the need to bring a car to campus during the academic year. By not bringing a car to campus, students reduce their environmental impact and save significant money as compared to car ownership.

## REGISTER YOUR VEHICLE

Parking at Lafayette College is limited and not guaranteed. If you are considering bringing a motor vehicle to the College, you must complete this online parking request. Students are not permitted to possess a motor vehicle at Lafayette College unless it is properly registered with the Office of Public Safety.

The current registration fee for an academic year is \$420 (billed to your account).

Visit the website [<https://publicsafety.lafayette.edu/parking>] to complete registration.

## PUBLIC TRANSPORTATION

The Easton Bus Terminal connects downtown Easton with New York City and other areas via the following bus lines:

- LANta Bus ([lantabus.com](http://lantabus.com)) — Lehigh and Northampton Transit Authority
- Trans-Bridge ([transbridgebus.com](http://transbridgebus.com))
- Greyhound ([greyhound.com](http://greyhound.com))
- Susquehanna Trailways ([susquehannabus.com](http://susquehannabus.com))

## DIVERSITY STATEMENT

Lafayette College is committed to creating a diverse community: one that is inclusive and responsive, and is supportive of each and all of its faculty, students, and staff. The College seeks to promote diversity in its many manifestations. These include but are not limited to race, ethnicity, socioeconomic status, gender, gender identity, sexual orientation, religion, disability, and place of origin.

The College recognizes that we live in an increasingly interconnected, globalized world, and that students benefit from learning in educational and social contexts in which there are participants from all manner of backgrounds. The goal is to encourage students to consider diverse experiences and perspectives throughout their lives. All members of the College community share a responsibility for creating, maintaining, and developing a learning environment in which difference is valued, equity is sought, and inclusiveness is practiced.

It is a mission of the College to advance diversity as defined above. The College will continue to assess its progress in a timely manner in order to ensure that its diversity initiatives are effective.





# LAFAYETTE COLLEGE

*Advising and Co-Curricular Programs*

Scott Hall

714 Sullivan Road  
Easton, PA 18042

*Principal Photography by Chuck Zovko*